



Bungalow townhomes for rent
in the heart of the Village of Carp



WELCOME TO HUNTLEY HOLLOW

Stroll through life in the beautiful and vibrant Village of Carp and feel at home – enriched by the local goodness of the Carp River, the Farmer’s market and boutique shops.

This modern lifestyle community is designed to continue the heritage of small-town living, steps from the heart of the Village, but only 10 minutes away from big city shopping and amenities.



Small-town living. Minutes from big city amenities.

Ideally situated on Langstaff Drive in Carp, ON, Huntley Hollow is steps from the boutique shops, restaurants and amenities on Carp Road and Donald B. Munro Drive. Walk to the curling club, the Farmer’s Market, the Carp Fair or the Splash Pad.

Be at the golf course or library in under five minutes by car, and at a major shopping area in ten minutes. It’s the best of both worlds!

A place to connect.

Next to ravine lands and surrounded by trees, creeks and walking paths this development - built by Inverness Homes and managed by Tulip Property Management - is specifically designed to connect you with the great outdoors, with your community, and with your neighbours.



TOWNHOME FEATURES & SPECIFICATIONS

Bungalow townhome with 9' main floor ceilings, one-car garage and screened-in porch

Kitchen

- Quartz countertops throughout
- Professionally designed, custom-crafted cabinetry with quick release hinges and soft close hardware
- Ceramic tile backsplash
- Undermount stainless steel sink, with one handle faucet and pull-down spray
- Stainless steel fridge, stove, dishwasher
- LED pot lights

Bathrooms

- 4-piece ensuite bathroom and a main level 3-piece bathroom, with a 3-piece bathroom in the basement
- Bathroom vanities with quartz countertops
- Ensuite shower stall with custom glass shower door, ceramic tiled walls, and acrylic base
- Single lever faucets in vanities, showers, tubs
- Scald-guard temperature control valve on showers
- Tub surround tiled to the ceiling
- White toilets, tubs and sinks
- Low flush, water-saver toilets
- Vanity sink in 3-piece bathroom
- Mirrors above vanities
- Chrome tissue holders and towel bars
- Privacy lock on all bathroom doors

Interior Finishes

- Hardwood flooring on main level with ceramic tile in foyer and bathrooms
- Hollow-core wood interior doors on main level
- Black door hardware - lever style handles, privacy locks on primary bedroom, all bathroom doors
- Walls painted with washable, flat finish low VOC paint throughout
- Smooth ceilings throughout
- Modern style railings

Plumbing

- Single lever faucets and shower control
- Shut-off valves for all sinks and basins
- Washer and dryer
- Exterior hose-bibs in garage and at rear

Exterior Finishes

- Concrete front porch with broom finish
- ENERGY STAR® certified casement windows
- Insulated metal doors with deadbolt locks for main, rear and garage-to-house entries
- Overhead garage door

Landscaping

- Patio stone walkway to front entrance
- Fully sodded lots, front, sides and rear
- Pressure-treated wood stairs off screened-in porch to access backyard
- Paved driveway

Mechanical & Heating

- Programmable thermostat
- High efficiency dual-stage natural gas forced air heating system
- Fully ducted Heat Recovery Ventilator (HRV)
- High efficiency gas-fired tankless water heater

Electrical & Cabling

- Smoke and carbon monoxide detectors on each level, plus one in each bedroom - connected to electrical supply
- LED lighting throughout
- Ceiling fixture in all bedrooms
- Dining room ceiling fixture
- Electrical outlets in garage, and in garage ceiling
- Weather-proof outlet at front & rear entries
- Exterior lighting



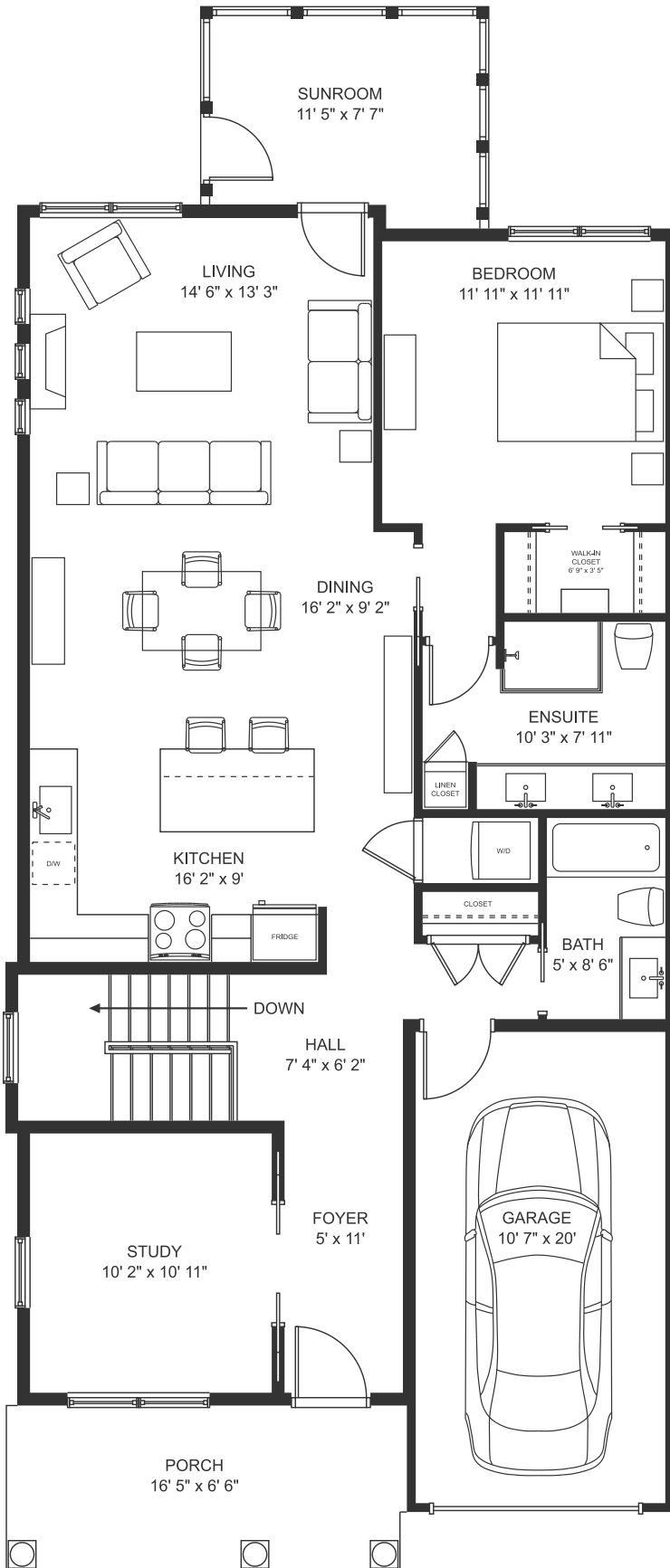
END UNITS



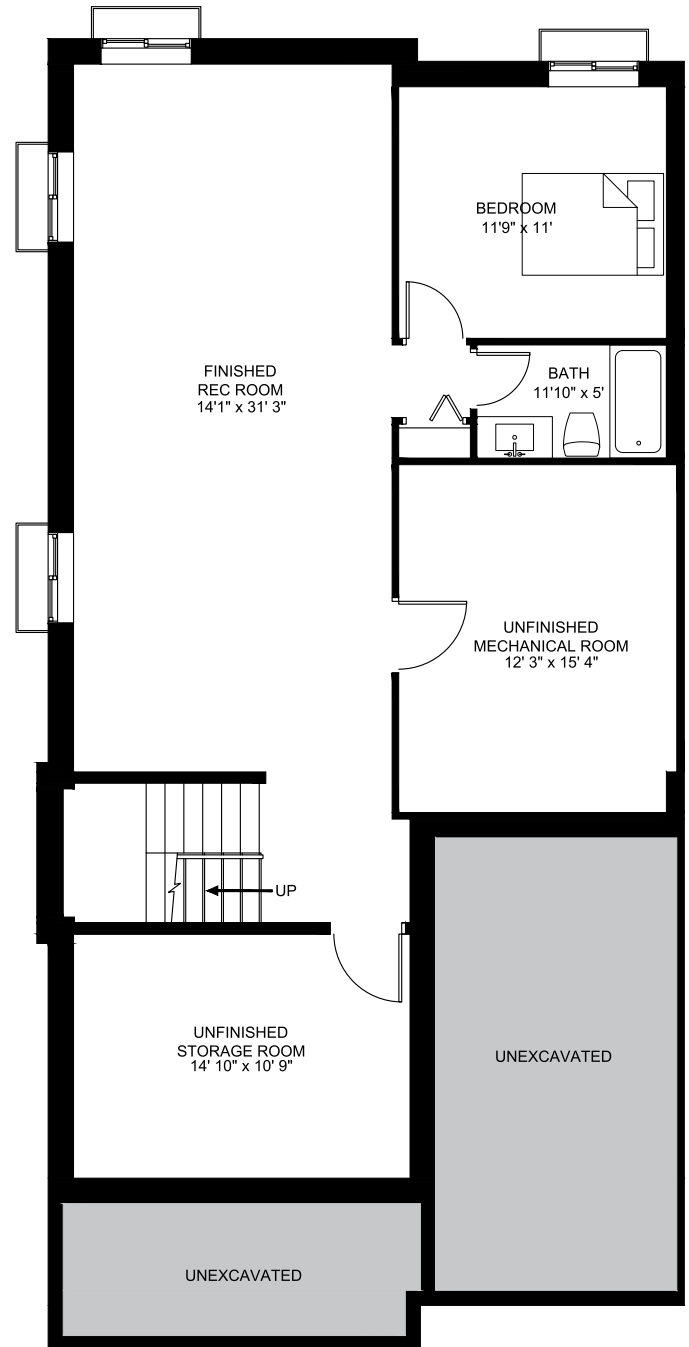
1,230 square feet

\$3,600/month

- Includes water, snow removal, lawn maintenance
- Gas and Hydro not included



Main level



Finished basement

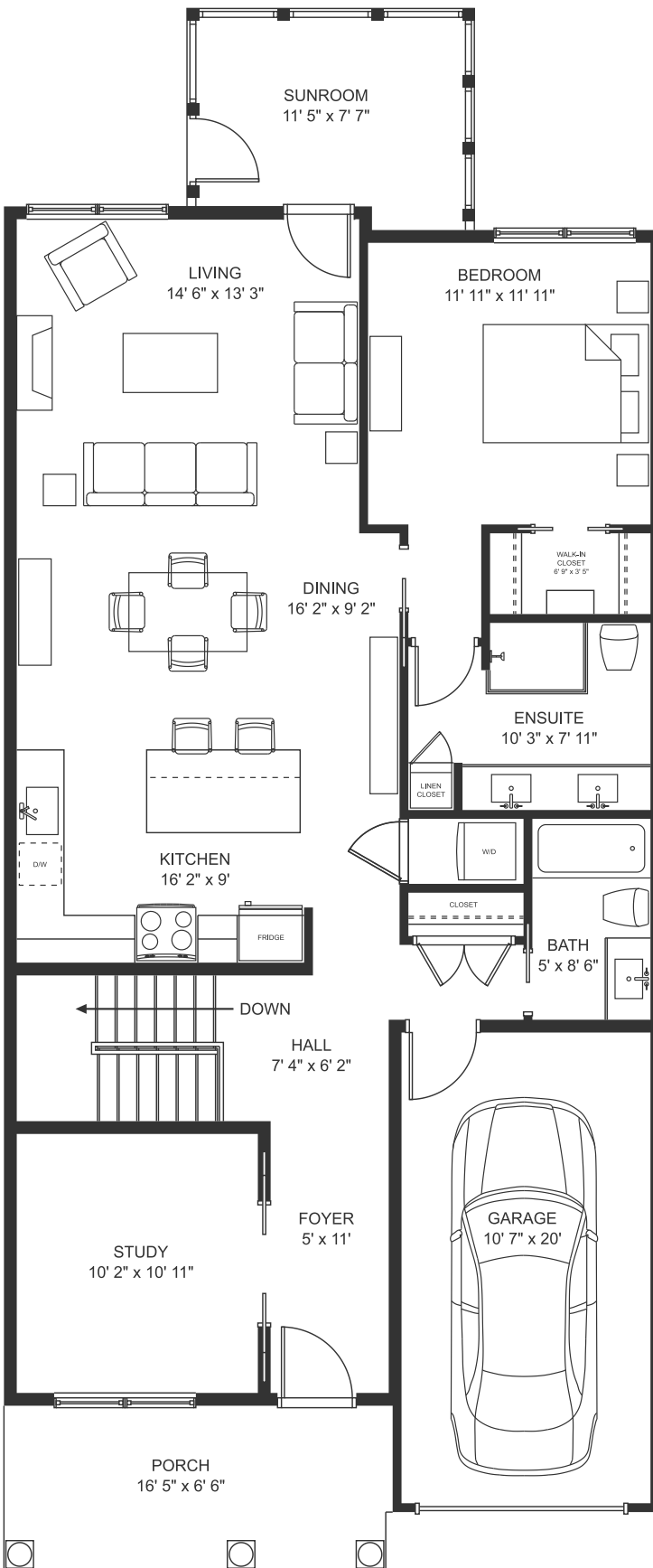
MIDDLE UNITS



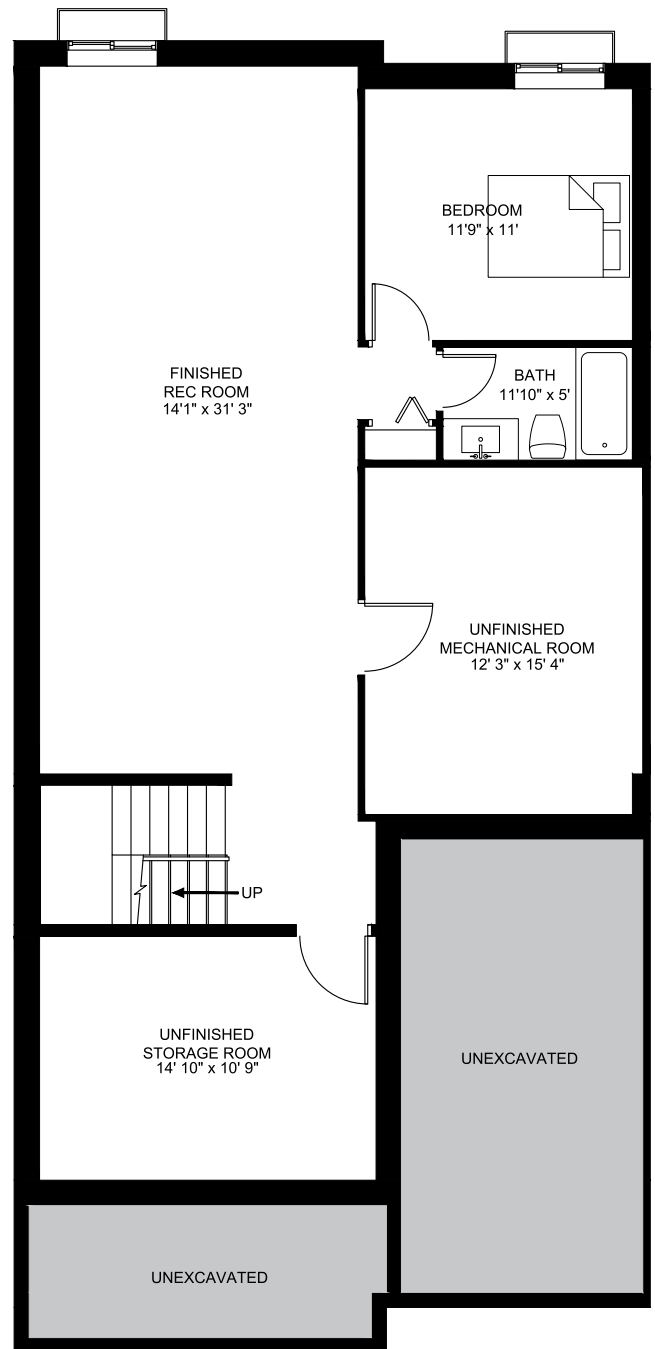
1,220 square feet

\$3,400/month

- Includes water, snow removal, lawn maintenance
- Gas and Hydro not included



Main level



Finished basement

